

FAW355

Piloto convencional estroboscópico a 24Vcc para pared. Rojo con lente roja. IP65. Base alta para tubo vista.

General

The FAW355 is a general purpose wall mount LED beacon for fire alarm applications. It features a special base deep containing all wiring connections and allow for easy removal/placement of the device. With an EN54-23 approved coverage pattern of W-2.4-7.5, each FAW355 may be mounted up to 2.4m high and cover a square room of 7.5 x 7.5m with a single device.

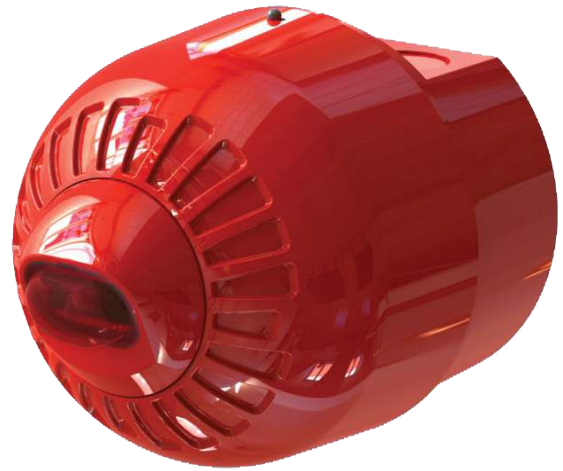
Easy and Fast Installation

The FAX350 beacons allow faster installation and maintenance thanks to an innovative mounting base. Dispensing with the need for locking screws, these beacons use TimeSaver™ bases from the 630 series detectors. Heads are simply locked onto the base with a “twist and click” action, allowing fitting or removal at any time because the base is the only component that needs to be wired. As the cabling requirement is reduced, commissioning time and costs are naturally reduced as well.

Efficient and versatile

The FAX350 beacons utilise a specially designed lens giving a uniformed light output over the specified coverage area. The flash rate of the beacon may be adjusted during installation, with a selection of 0.5Hz or 1Hz.

The mechanism for locking the device to the base may be activated if required. Once activated, a special tool is required to remove the beacon from the base.



Details

- Automatic synchronisation
- Anti-Tamper locking mechanism
- Deep mouting base
- Wiring directly to base
- Flash rate selectable
- IP65 Ingress protection

FAW355

Piloto convencional estroboscópico a 24Vcc para pared. Rojo con lente rojo. IP65. Base alta para tubo vista.

Technical specifications

Eléctrico

Voltaje de funcionamiento	17 to 60 VDC
---------------------------	--------------

Físico

Dimensiones físicas	100 x 104 mm (Ø x D)
Peso neto	250 g
Color	Rojo
Posición de montaje	Pared
Altura de montaje	up to 2.4 m
Material	Policarbonato de alto impacto

Medioambiental

Temperatura de funcionamiento	-25 to +70°C
Humedad relativa	5 to 95% noncondensing
Entorno	Interior, Exterior
Clasificación IP	IP65

Estándares y regulaciones

Certificación	EN54-23
---------------	---------

Operation

	Continuous
--	------------

Current consumption

	20mA @ 0.5 Hz / 40mA @ 1 Hz
--	-----------------------------

Flash rate

	0.5Hz or 1Hz
--	--------------

Automatic synchronisation

	Phased start
--	--------------

Line monitoring input

	Polarised input
--	-----------------

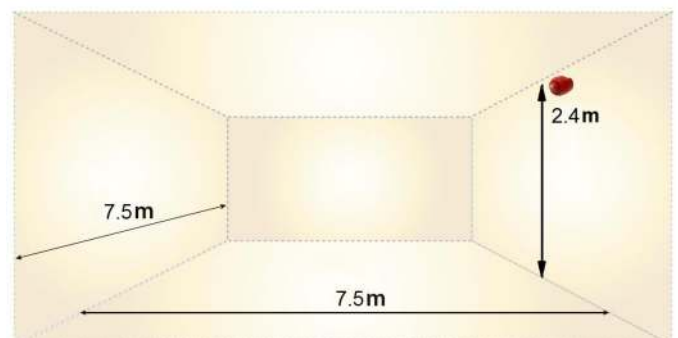
Flash colour

	Red
--	-----

EN54-23 rating

Light coverage	W-2.4-7.5
Floor coverage	up to 7.5 x 7.5 m

EN54-23 Coverage: W-2.4-7.5



Como empresa innovadora, Carrier Fire & Security se reserva el derecho de modificar las especificaciones de los productos sin previo aviso. Para conocer las últimas especificaciones de los productos, visite la Web de es.firesecurityproducts.com o póngase en contacto con su comercial.

Last updated on 24 January 2022 - 14:14