

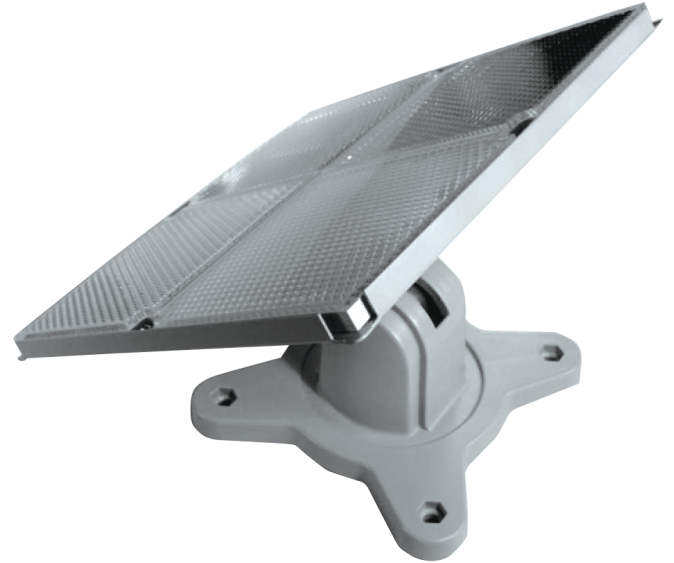
## FD-MB40

**Placa de sujeción para 4 espejos reflectores (OR2000), con opción para adaptar al suplemento de montaje FD-MB20.**

### General

---

The FD-MB40 is used in conjunction with the FD-MB20 to mount a four reflective prism at an off perpendicular axis. It allows for easy adjustment to ensure that the required angle between 0° and 45° can be achieved. It can be mounted vertically or horizontally.



### Details

---

- Easy adjustable
- 0° to 45° range

# FD-MB40

Placa de sujeción para 4 espejos reflectores (OR2000), con opción para adaptar al suplemento de montaje FD-MB20.

## Technical specifications

---

### Medioambiental

---

Entorno	Interior
---------	----------

---

