

FDD710

Duct Detector, Single Pipe Universal

Unique design

The FDD710 single pipe duct detector has been developed to detect smoke in ventilation ducts and combines a smoke detector and an adaptor system where both venturi pipe and housing are specially designed for optimum airflow through the smoke detector. The system fulfils all the requirements for safe fire detection with airflow speeds from 0,2 m/s to 20 m/s.

The FDD710 has been designed to accommodate almost all types of point detectors. Provision is made to fit the required detector base (not provided) into the duct detector.

Installer friendly

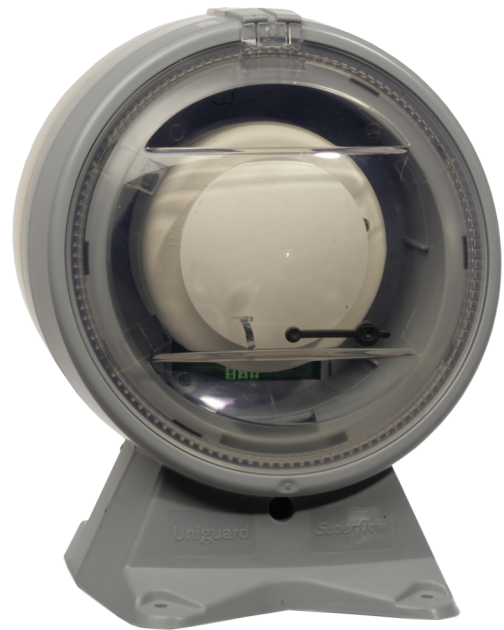
The unit is easily installed on ventilation ducts. The unique one pipe design ensures correct operation for air inflow and outflow. The unit is supplied standard with a 600mm sampling pipe. The FDD710LP 1.5m extra-long sampling pipe can be used in larger ducts if needed. These pipes can be cut to the correct length if required.

The rugged ABS plastic design ensures that the system is fully sealed for the correct air sampling, and operates over a wide temperature range. A special mounting bracket, the FDD710MB, can be used to mount the unit on irregular shaped or circular ducts.

A terminal block allows easy connection of the detector cables.

Maintenance friendly

The detector inside the FDD710 is easily tested without having to remove the cover by using the test hole. A sensitive flow indicator shows that the correct amount of air is flowing through the detector. Depending on the detector used, a clean-me signal can be obtained, or the fire panel can issue a maintenance warning.



Details

- One-pipe air sampling system
- Conventional or analogue addressable detectors
- Test hole on cover
- Simple installation
- Sensitive flow indication
- Simple service and maintenance
- Installer-friendly connection of cables
- Foolproof installation of sampling tube
- Specially designed venturi pipe to ensure optimum performance

FDD710

Duct Detector, Single Pipe Universal

Technical specifications

Detection

Air velocity	0.2 m/s - 20 m/s
--------------	------------------

Sampling pipe

Length	600 mm
--------	--------

Physical

Physical dimensions	180 x 235 x 183 mm
---------------------	--------------------

Colour	Grey
--------	------

Material (body)	ABS
-----------------	-----

Environmental

Operating temperature	-20 to +50°C
-----------------------	--------------

Environment	Indoor
-------------	--------

IP rating	IP54
-----------	------

As a company of innovation, UTC Fire & Security reserves the right to change product specifications without notice. For the latest product specifications, visit UTC Fire & Security online or contact your sales representative.

Last updated on 12 June 2020 - 16:47

